

I-O TC4000 Thin Client



An economical Windows based terminal, designed to combine the power of the IBM's AS/400 - iSeries with the flexibility of Windows based systems

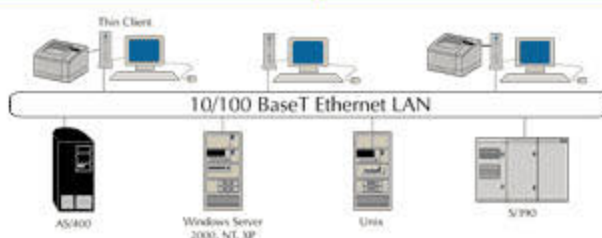
The I-O Thin Client is an economical Windows based terminal, designed to combine the power of the IBM's AS/400 - iSeries with the flexibility of Windows based systems - two worlds that are now only keystrokes apart. The TC4000 Thin Client comes with an Internet browser, offering access to the World Wide Web. In addition, the I-O Thin Client allows native IBM AS/400-iSeries print jobs to be printed in an Ethernet environment.

Compared to expensive PC workstations, the I-O Thin Client saves time and money by allowing system administrators to confirm, manage, and update each workstation from a central location. Applications are served to the I-O Thin Client, preventing unwanted software and viruses from being introduced to the network.

For years, I-O Corporation has been a pioneer in IBM Midrange emulations. In addition to outstanding IBM display emulations, the I-O Thin Clients incorporates I-O's highly acclaimed IBM host printer emulations. Native AS/400-iSeries print jobs can be printed over Ethernet LAN without being lost in the "black hole" of network printing. Users have the flexibility and control of page range printing, error reporting, and faster printer speeds. These award-winning emulations combined with I-O's traditional 122-host keyboard, offer IBM midrange users superior printer control and fast data entry.

Technical Specifications

Operational <ul style="list-style-type: none">• Windows CE v3.0• I-O's TN5250e Printer Emulations• ICA & RDP Support• IE Browser v.4.0• Remote Management software	Ports <ul style="list-style-type: none">• 2 USB• 1 Parallel• 2 Serial• Stereo out & Mic in• VGA Display• PS/2 Mouse• PS/2 102 or I-O 122-key Thin Client Keyboard• RJ45 10/100 Fast Ethernet
Network <ul style="list-style-type: none">• TCP/IP with DNS, Windows• Fast Ethernet 10/100 BaseT Auto Sensing• DHCP Client	Physical <ul style="list-style-type: none">• National Geode 233MHz Processor• 210x255x62 mm 8.25"x10"x2.56"• Weight 6 lb.• External Power Supply Voltage 90-260 VAC Frequency 50-60 Hz Consumption <20 W• 32MB RAM + 16MB Flash
Terminal Emulations <ul style="list-style-type: none">• IBM TN5250e• IBM TN3270e & IBM 3151• VT100, VT220, VT320• WY60 & WY120• ADDS & TVI	Display Support <ul style="list-style-type: none">• XVGA Monitor Support up to 1280x1024 resolution• AS/400 132 & 80 Columns• Mono & Color with upto 65535 colors• Up to 85Hz refresh
OS Support <ul style="list-style-type: none">• Windows 2000 Server / Advance Server• Windows NT Terminal Server• Windows XP• Citrix WinFrame, MetaFrame• Unix	Host Printing Emulations <ul style="list-style-type: none">• IBM SCS 3812 and 4214



I-O's IBM Host Printing Emulations Now Available!!!

Plus a wide range of additional features that boost productivity and performance.

Features	Benefits
Supports AS/400 - iSeries, mainframe, Windows, & Unix	Multiple host access using only one display station
I-O TN5250e printing emulations for AS/400-iSeries host print jobs over Ethernet	Page range printing, error reporting, faster speeds, and print jobs are not lost in the "black hole" of Ethernet printing. Parallel or serial printers supported
True IBM 122-key 5250 keyboard layout	Windows and AS/400 - iSeries compatible - Input is made fast & easy
Internet Explorer Browser v.4.0	Access to the World Wide Web and browser applications
Applications reside on host servers	Prevents unwanted software and viruses from being introduced to the network
Central Control of configuration, management, & software updates	Economical, time-saving solution when compared to PCs - Easy to manage
Microsoft Windows CE operating system	Industry standard that supports Windows applications
Small Footprint	Unobtrusive use of desk and office space